



CATALOG NUMBER	TYPE
PROJECT NAME	DATE

## SPECIFICATIONS

### FEATURES

- Recessed through-wall night light
- Choice of three face designs: full opal lens, straight louver, or angled louver

### CONSTRUCTION

- Galvanized steel construction
- Factory pre-assembled and supplied with all necessary mounting brackets/straps needed for installation
- Choose from four finishes: brushed aluminum, white, black, or bronze; consult factory for more options

### ILLUMINATION

- 12 white LEDs can be used as a direct or indirect lighting source

### ELECTRONICS

- 120/277 VAC input draws 3W max

### OPTIONAL BATTERY

- Nickel-cadmium battery is standard for EM option
- Optional battery backup provides a minimum of 90 minutes of illumination in emergency mode

### COMPLIANCE

- Meets UL standards

### WARRANTY

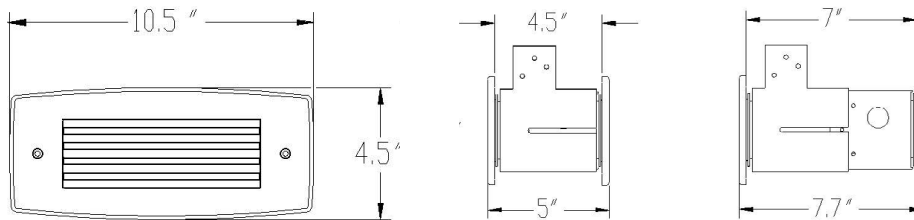
- 5-year limited warranty on housing and electronics

## NLT NIGHTLIGHT

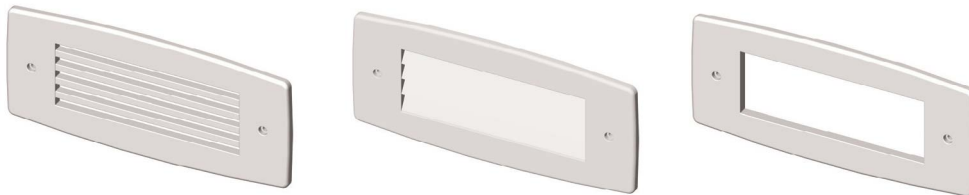
THROUGH-WALL NIGHT LIGHT



## DIMENSIONS



## FACEPLATE DESIGNS



## ORDERING GUIDE

MODEL	FACEPLATE	FINISH	OPTIONS
<b>NLT</b> Through-wall Night Light	<b>FL<sup>1</sup></b> Full Opal Lens <b>AL</b> Angled Louvers <b>SL</b> Straight Louvers	<b>BA</b> Brushed Aluminum <b>WH</b> White <b>BL</b> Black <b>BR</b> Bronze	<b>EM</b> Batter Backup <b>TPS</b> Tamperproof Screws <b>TPSD</b> Tamperproof Screwdriver

### Notes:

1. Includes Opal Poly Lens