



TYPE \_\_\_\_\_

CATALOG# \_\_\_\_\_

## EU-2-HD 30 OR 50 WATT REMOTE CAPABLE EMERGENCY UNIT

### GENERAL DESCRIPTION

Redefining the aesthetic standards the industry has settled for in the past, the EU-2-HD emergency light packs the power you need for remote capability while offering the maximum performance of two fully adjustable lamp heads. This unit eliminates the need for the bulky lunch box versions of the past with a uniquely contoured thermo plastic housing that blends nicely in any environment.

### HOUSING

UV Stable thermo- plastic flame retardant meets UL standard 95-VA. Standard white or black finish (matches all products in same family). Surface mount easy installation low profile design features two square Metal Reflector and Glass Diffuser fully adjustable heads. Damp location listed standard.

### ILLUMINATION

Two High Intensity 5.4 watt lamps mounted in photometrically optimized precision formed reflector assemblies exceed illumination required by UL 924 with better space to mounting criteria than the industry standard incandescent offerings. The soft etched Glass lens eliminates glare and striation often associated with prismatic spread lenses while providing even distribution along areas of egress.

### ELECTRONICS & BATTERY

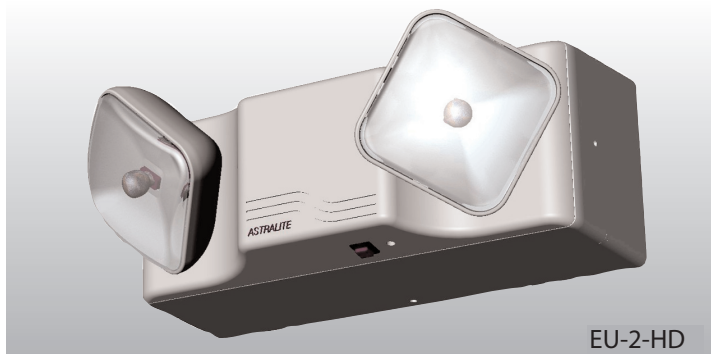
Dual Transformer input Voltage (120/277 VAC) Powers the fully automatic Solid State charging system which features (LVD) Low Voltage Disconnect, AC lockout installation and brown out protection and AC indicator LED light standard. The maintenance free Sealed Lead Calcium battery provides a minimum of 90 minutes of illumination in emergency mode with an average life of 5 years. Optional Nickel Cadmium battery also available.

### CODE COMPLIANCE

Tested and Listed to UL 924 Damp location. Meets or exceeds NFPA NEC and OSHA illumination standards.

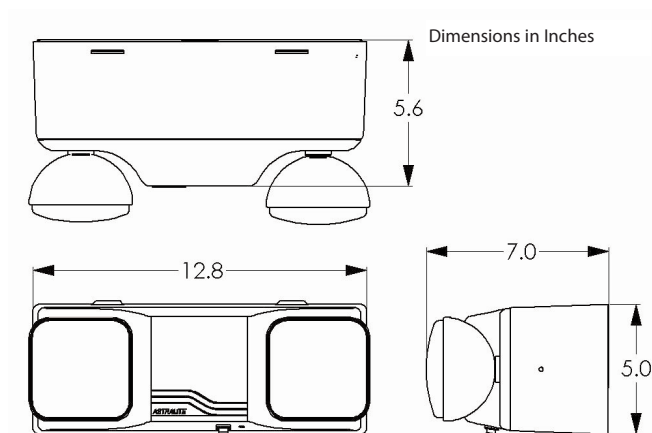
### WARRANTY

5 years on housing and electronics with a 5 year pro rated warranty on battery.



EU-2-HD

Wall Mount



\*Note: To determine Maximum Remote Wattage, Subtract total integral lamp Watts from total DC Unit Wattage.

Example: 50 Watts (Total DC Wattage) minus Aprox. 11 Watts (2X5.4 Watt Lamps) Equals 39 Watts Maximum available for remote lamps

EU-2-HD

Model

Housing  
Color

W White  
B Black

Total  
DC Wattage

30  
\*50  
  
\*Capable of  
60w at 12v

Voltage

6V  
12V

FACTORY INSTALLED  
OPTIONS

220 220 VAC Input  
LC Line Cord (3FT)  
NC Nicad Battery  
AM Ammeter  
VM Voltmeter  
SD Self Diagnostics  
\*\*TD Time Delay

\*\* TD Must Specify AC Input  
Voltage and Delay Time in  
Minutes.



CO 004A

20 Pocono Rd. Brookfield, CT. 06804 Tel: 800-832-5483 ~ Fax: 203-775-0797

CO 4

COMMERCIAL SERIES