



TYPE _____

CATALOG# _____

EU-2-H

(Xenon) 2 HEAD EMERGENCY LIGHT

GENERAL DESCRIPTION

Redefining the aesthetic standards the industry has settled for in the past, the EU-2-H commercial series product offers the high performance of xenon lamps while minimizing the quantity needed for illuminating paths of egress. This fully adjustable Life Safety product features a unique gently contoured thermo-plastic housing with two 6 Watt Xenon lamp heads and is designed to provide the highest levels of glare free illumination while blending nicely into any environment.

HOUSING

UV Stable Thermo-plastic flame retardant meets UL standard 95-VA. Standard white or black finish (matches all products in same family) features the industry's fastest installation in two easy steps where as the contractor never has to access the unit internally. Back mounting plate can be installed at rough in while main unit can be simply snapped into place after final touchups have taken place.

ILLUMINATION

Two 6 Watt Xenon 6V lamps mounted in precision formed photometrically optimized sealed reflector assemblies exceed illumination required by UL 924 with better space to mounting criteria than the industry standard 5.4 Watt incandescent offering. The soft etched tempered glass lens eliminates glare and striation often associated with prismatic spread lenses while providing even distribution along areas of egress.

ELECTRONICS & BATTERY

Dual Voltage 120/277 VAC input facilitates the fully automatic Solid State charging system which features (LVD) Low Voltage Disconnect, AC lockout installation, brown out protection and AC indicator LED light with push to test button standard. The maintenance free Special 6 AH sealed lead calcium battery provides a minimum of 90 minutes of illumination in emergency mode with an average life of 5 years. Optional Nickel Cadmium battery.

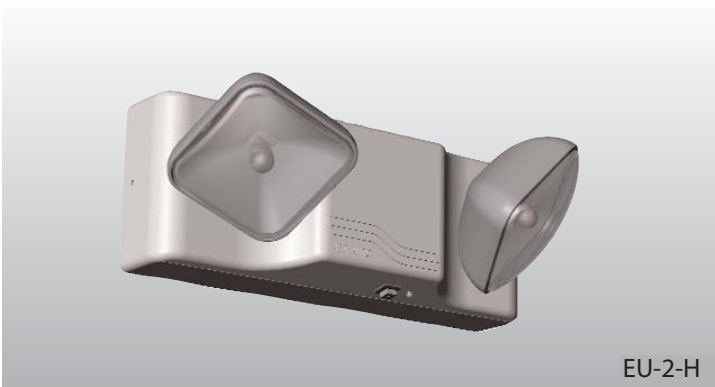
CODE COMPLIANCE

Tested and Listed to UL 924 for damp location, meets or exceeds NFPA, NEC, and OSHA illumination standard.

WARRANTY

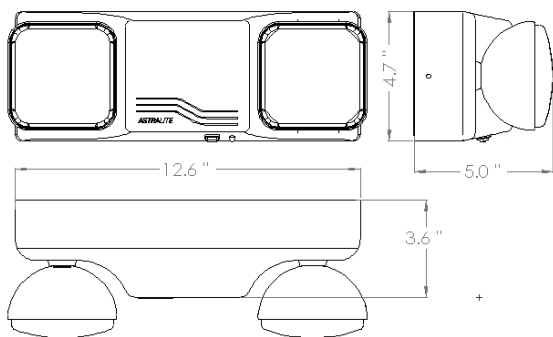
5 years on housing and electronics with a 5 year pro rated warranty on battery.

COMMERCIAL SERIES



EU-2-H

Wall Mount



Installation



Step 1
Install Back
Plate

Step 2
Push in
Housing

EU-2

Model

H

Lamps

H 6 Watt Xenon

Housing Color

W White
B Black

FACTORY INSTALLED
OPTIONS

220 220 VAC Input
LC Line Cord (3FT)
NC Nicad Battery
AM Ammeter
VM Voltmeter
SD Self Diagnostics
**TD Time Delay

** TD Must Specify AC Input
Voltage and Delay Time in
Minutes.

